

Honors and Certificates



WISERSCOPE

We provide leading technology and solution in medical endoscope

Our Values:

Deliver **Quality** and **Focus** to create **Customer Satisfaction**
Drive **Innovation** and **Performance** to keep **Sustainability**



Our value is to create the value of customer

Our competitiveness is to improve the competitiveness of customer

Our success is to achieve the success of customer

Contact us

Guangzhou Wiserscope Co., Ltd.
Address: Room 304, Building B10, No.11 Kaiyuan Avenue,
Huangpu District, Guangzhou China.
Hoping Cao, E-mail: caohoping@wiserscope.com
Tylor Fang, E-mail: fangchengyang@wiserscope.com
Website: www.wiserscope.com



About Us

In Mar.2019, Wiserscope was founded by technical experts who held about 20 years' experience in digital imaging and advanced manufacturing technology.

Regarded as a technical background company, we focus R&D and manufacturing of imaging module for medical endoscope, including core components, semi-manufactured products, medical imaging devices, etc. We do provide products or CDMO services with customized endoscopic design and requirement, contribute our value to support customer R&D, licensing and market development.

Wiserscope equips over 1000 sq.m workshop with GMP system (includes 10K and 1Kclass dust-proof workshop, comprehensive physical and chemical lab, microbiological detection lab, positive test lab and sterility test lab).

Wiserscope was certified both ISO9001:2015 and ISO13485:2016 quality management system.

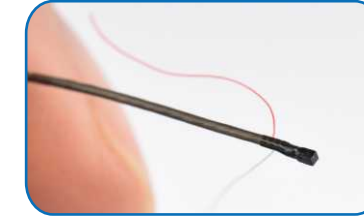
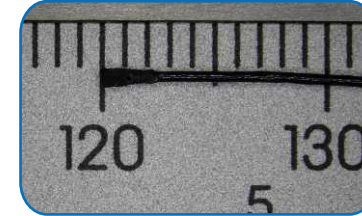
Our Mission:

Fully integrate the technologies in optics, mechanics, electronics and algorithm to serve human health with safe and advanced medical instruments.



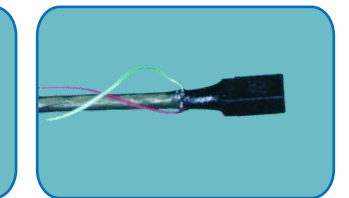
Introduction

AM series for ultrafine endoscope:



AM Series			
Camera Module	Active Array Size		200*200
	Field of View		120°
	Direction of View		0°, forward viewing
	Depth of Field		3-50mm
	Module Size		0.64*0.64mm
Cable Feature	Cable OD	Cable Cores	Cable Length
	Ø 0.47mm	4	Customizable
	Ø 0.55mm	4	
Ø 0.55mm	6		
Soldering Length	≤ 1.5mm		
Optional Solution	Camera Module + LED Camera Module + Optical Fiber Camera Module + Lighting + Distal Tip		

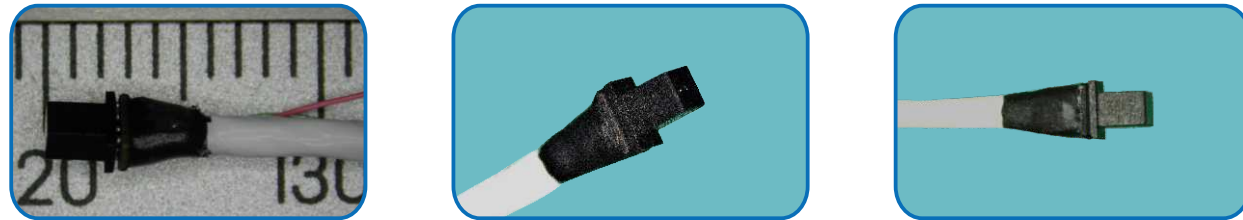
CM series for ultrafine endoscope:



CM Series			
Camera Module	Active Array Size		400*400/700*700
	Field of View		90° and 120° alternative
	Direction of View		0°, forward viewing
	Depth of Field		3-50mm
	Module Size		1.05*1.05mm/0.65*0.65mm
Cable Feature	Cable OD	Cable Cores	Cable Length
	Ø 0.47mm	4	Customizable
	Ø 0.55mm	4	
Ø 0.55mm	6		
Soldering Length	≤ 1.5mm		
Optional Solution	Camera Module + LED Camera Module + Optical Fiber Camera Module + Lighting + Distal Tip Camera Module with side lap soldering		

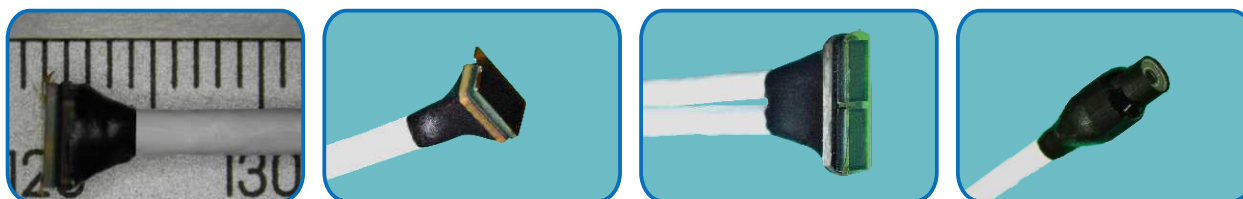
Introduction

DM series for standard definition endoscope:



DM Series			
Camera Module	Active Array Size		800*800
	Field of View		120°
	Direction of View		0°, forward viewing
	Depth of Field		5-100mm
	Module Size		1.53mm*1.53mm(minimumportion)
Cable Feature	Cable OD	Cable Cores	Cable Length
	Ø0.95mm	13	Customizable
	Ø1.4mm	13	
Soldering Length	≤ 3mm		
Optional Solution	Camera Module + LED Camera Module + Optical Fiber Camera Module + Lighting + Distal Tip		

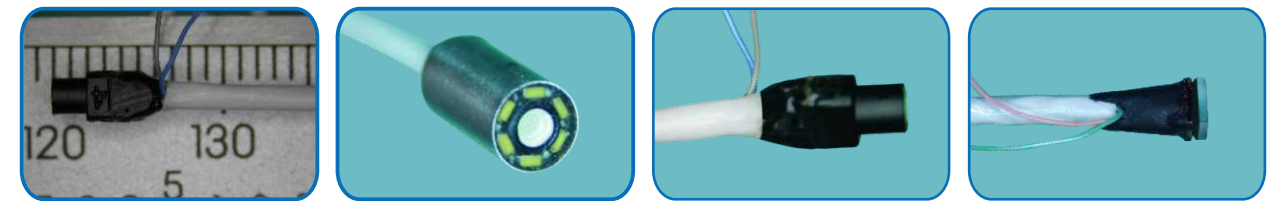
KM series for standard definition endoscope:



KM Series			
Camera Module	Active Array Size		1920*1080
	Field of View		100° / 140° alternative
	Direction of View		0°, forward viewing
	Depth of Field		5-50mm / 8-100mm alternative
	Module Size		Φ3.0mm (minimum portion)
Cable Feature	Cable OD	Cable Cores	Cable Length
	Ø1.4mm	13	Customizable
	Ø2.0mm	14	
Soldering Length	≤ 3mm		
Optional Solution	Camera Module + LED Camera Module + Optical Fiber Camera Module + Lighting + Distal Tip		

Introduction

MM series for standard definition endoscope:



MM Series			
Camera Module	Active Array Size		1280*720
	Field of View		100°
	Direction of View		0°, forward viewing
	Depth of Field		5-50mm / 8-100mm alternative
	Module Size		Φ2.0mm (minimum portion)
Cable Feature	Cable OD	Cable Cores	Cable Length
	Ø0.95mm	13	Customizable
	Ø1.4mm	13	
Soldering Length	≤ 3mm		
Optional Solution	Camera Module + LED Camera Module + Optical Fiber Camera Module + Lighting + Distal Tip		

CDMO for distal tip:



CDMO service for distal tip based on customer requirement (metals, plastics)
Includes: designing, modeling, tooling, assembling, etc.

Introduction

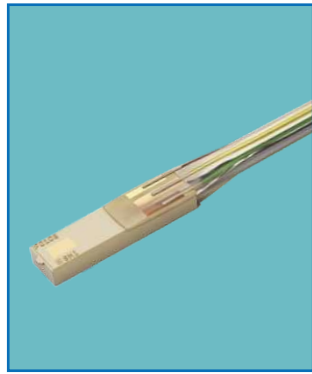
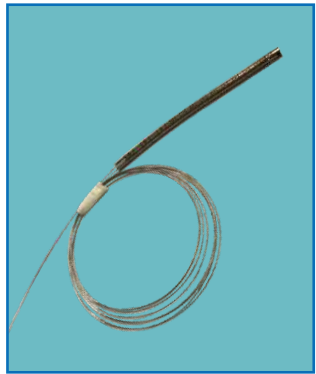
CDMO for accessories:

Snake Bone Components

Light Guide - Fiber Lighting

Intraoperative Sensor

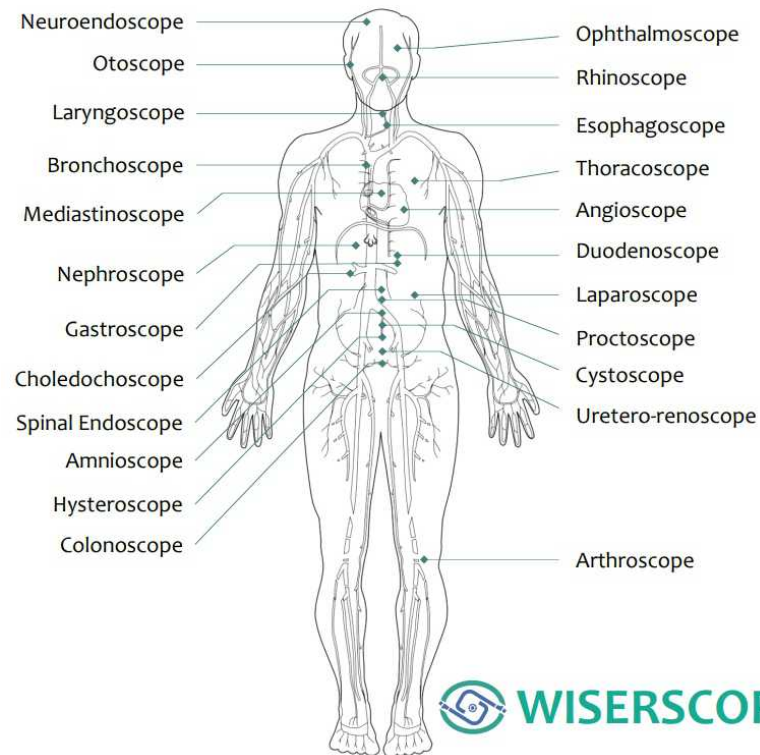
Ultra-fine Endoscope



Customizing various types of snake bone components, lighting fiber both glass made or plastic made, light guide (fiber bundle)

Customizing various intraoperative sensors (temperature & pressure), ultrafine endoscope with fiber lighting

CDMO for total solution:



Provides total solution for various department endoscopic use.

Introduction



Flexible Ureteroscope



Flexible Cystoscope



Flexible Choledochoscope



Flexible Bronchoscope



Binocular 3D Endoscope



Rigid Uteroscope



Arthroscope



Rigid Cystoscope



Provides total solution for various department endoscopic use.